


PRODUCT SHEET

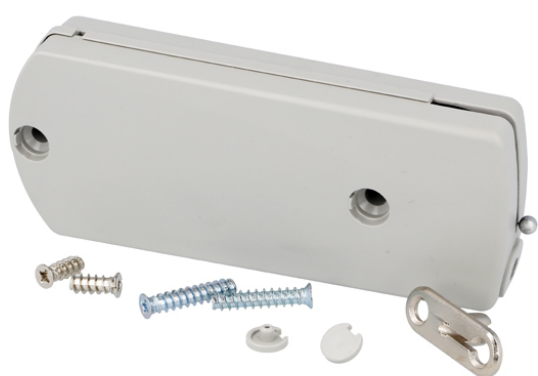
Description:

Flap Stay, "STRING", Model B, 60 N, Grey, W/Adjustable Opening Angle & Soft Open & Self Closing Mechanism, For, Horizontal or Vertical Use, F/Left or Right Hand Use, Incl. Front Fixing Bracket - NPL, Max Flap Weight: 9 kg

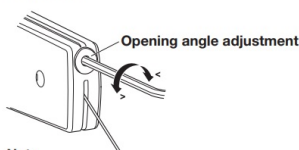
Item number:

15.10.360-0

Units	Box	Carton	HS Code	Barcode
Pcs.	1	10	8302420090	
				5704866056809



Adjustment

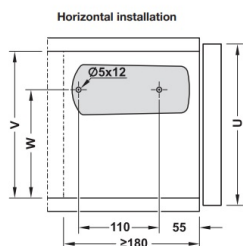


Note
Ease door weight during adjustment.

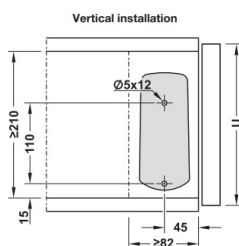
Fitting

Material: Housing: Plastic; Front Fixing Brackets: Zinc Alloy
Finish: nickel-plated

Supplied With
Front fixing bracket
Mounting material

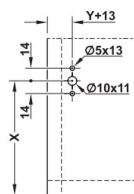
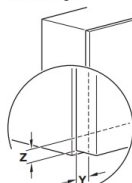


U	V	W	X
210-270	≥173	135	123 + Z
270-480	≥186	148	144 + Z



U	X
230-480	123 + Z

Front fixing



U = door height
V = internal cabinet height
W = drill hole height
X = center of front fixing
Y = lateral door overlay dimension
Z = bottom door overlay dimension

SISO A/S

Mileparken 11
DK-2740 Skovlunde
Denmark
VAT: DK 24786013

Phone +45 45 830 900

www.siso.dk
siso@siso.dk

Danske Bank
Nytorv Branch
Copenhagen
SWIFT: DABADKKK

Account no.
4180 3112 112936
IBAN Account
DK7230003112112936